

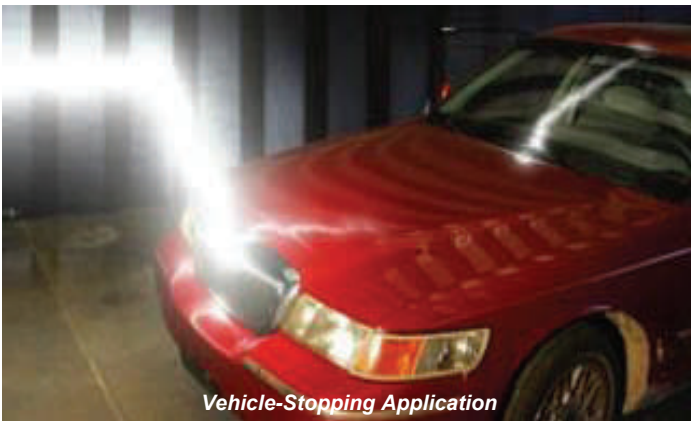


Applied Energetics

About Laser-Guided Energy (LGE™)

Laser Guided Energy (LGE™), Technology pioneered by Applied Energetics, Inc., combines the speed and precision of lasers with the overwhelming punch of high-voltage electricity. This advanced “man-made lightning” is effective against a wide variety of potential targets, and offers selectable and tuneable properties that can help protect non-combatants and combat zone infrastructure.

LGE™ is unique in the field of Directed Energy because the laser is the enabling technology, creating the optical path for the subsequently transmitted electricity. The selectable, near-instantaneous effects are due to high-voltage electricity, at manageable power requirements. The ability to create a path, direct and transmit electricity, and control the effects can be considered a revolutionary concept and capability.



Transformational Aspects of (LGE™)

- Rapid response, speed-of-lightning
- Rapid effects, no dwell-time required
- Tunable effects, from less-than-lethal to lethal
- Efficient effects mechanism, tens-of-joules
- Laser accuracy, reduced collateral damage
- Distance control, reduced collateral damage
- Multi-mission, single platform capability
- High firepower
- Deep magazine

